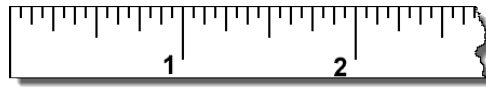


NON-GRADED DATA & STATISTICS SELF-ASSESSMENT

<p>(1) For the following set of numbers, give the mean, median, mode, and range. Also, draw a box & whiskers plot for the data:</p> <p>40, 19, 42, 47, 52, 54, 42, 51, 44, 53</p>	<p>(2) Find the probability:</p> <p>(a) Flip a fair coin. What is the probability of getting heads?</p> <p>(b) Flip two fair coins. What is the probability of getting two heads?</p> <p>(c) Shake a fair, 6-sided die. What is the probability of getting a five?</p>
<p>(3) Jolene has 6 shirts, 4 pants, and 2 pairs of shoes. How many unique outfits could she create of one shirt, one pant, and one pair of shoes?</p>	<p>(4) Give the next two numbers in each sequence:</p> <p>(a) 14, 17, 20, 23, _____, _____, ...</p> <p>(b) 3, 6, 12, 24, _____, _____, ...</p> <p>(c) 1, 1, 2, 3, 5, 8, 13, _____, _____, ...</p>

(5) A certain parking lot charges 75-cents for each hour a car is parked. Any portion of an hour is charged for a full hour. How long can Jolene park for \$5.00?

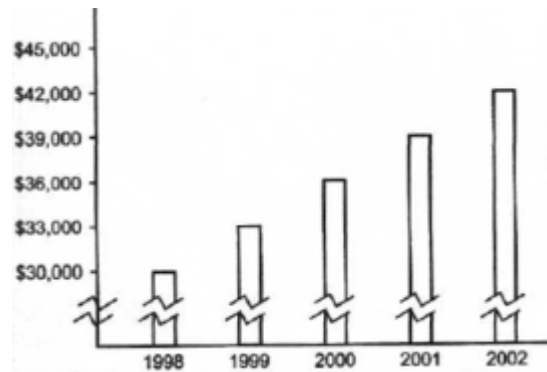
(6) Mark the ruler at $1 \frac{5}{8}$ inches:



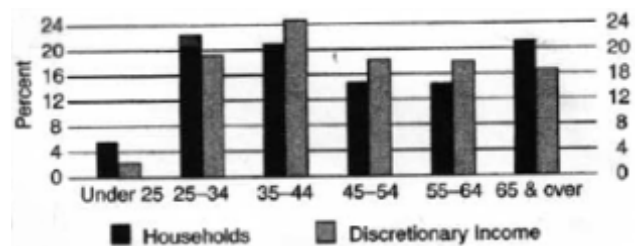
What download speed is shown on the gauge below?



(7) Find the average of those years with mean incomes over \$36,000.



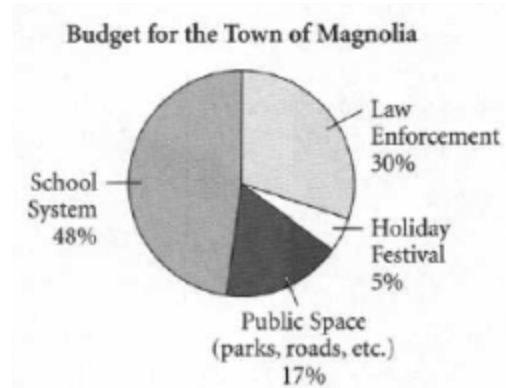
(8) Which age group has the most discretionary income?



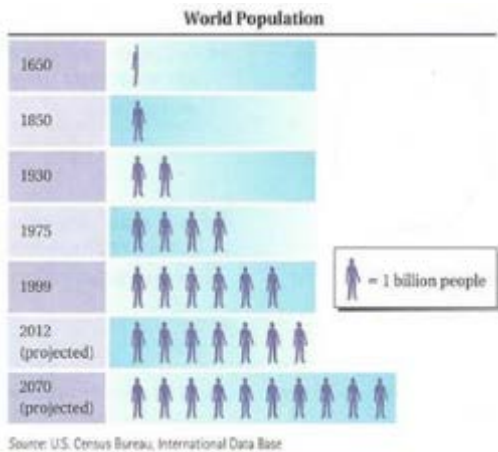
(9) In which month were the most barrels sold? In which month were the least barrels sold?



(10) What percent of the total budget is spent on the school system and law enforcement combined?



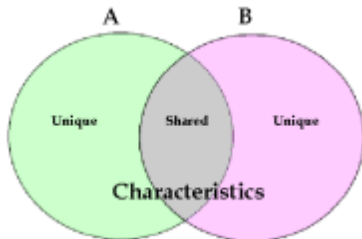
(11) What was the world population in 1650? What happened to the world population from 1930 to 1975?



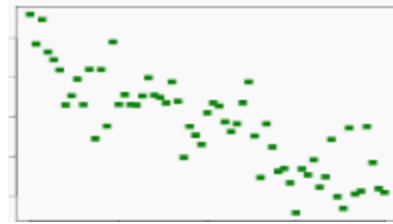
(12) On the average, how many earthquakes per year do we have that measure from 6.0 to 8.9?

Magnitude	EQ/year
8.5 – 8.9	0.3
8.0 – 8.4	1.1
7.5 – 7.9	3.1
7.0 – 7.4	15
6.5 – 6.9	56
6.0 – 6.4	210

(13) Circle A represents those who are married. Circle B represents those who are female. What can you say about the overlapping area of the green and pink circles?



(14) Draw a line of best fit on this scatterplot:

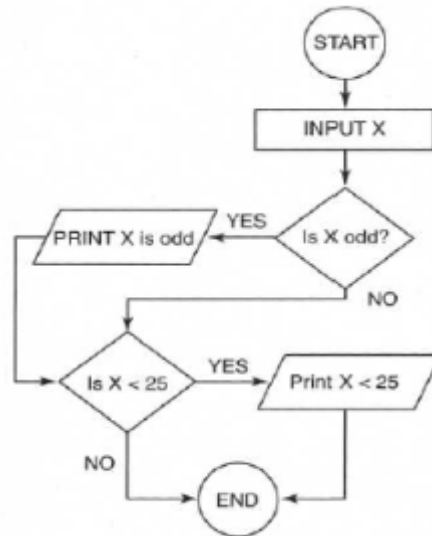


(15) List all the numbers in the stem & leaf plot below that are even numbers:

tens	ones
0	1 5 8 8
1	3 6 6 6 7
2	
3	1 2 5

(16) Using the flow chart below,

- (a) What happens when $X = 16$?
- (b) What happens when $X = 19$?
- (c) What happens when $X = 27$?



(17) What is the average frequency shown in the frequency table below?

Number	Frequency
3	4
4	8
6	2
7	4
8	2

(18) Draw a logic diagram to represent the following statements:

- (a) ALL cats have tails.**
- (b) SOME cats are black.**
- (c) Goldy is a cat.**